

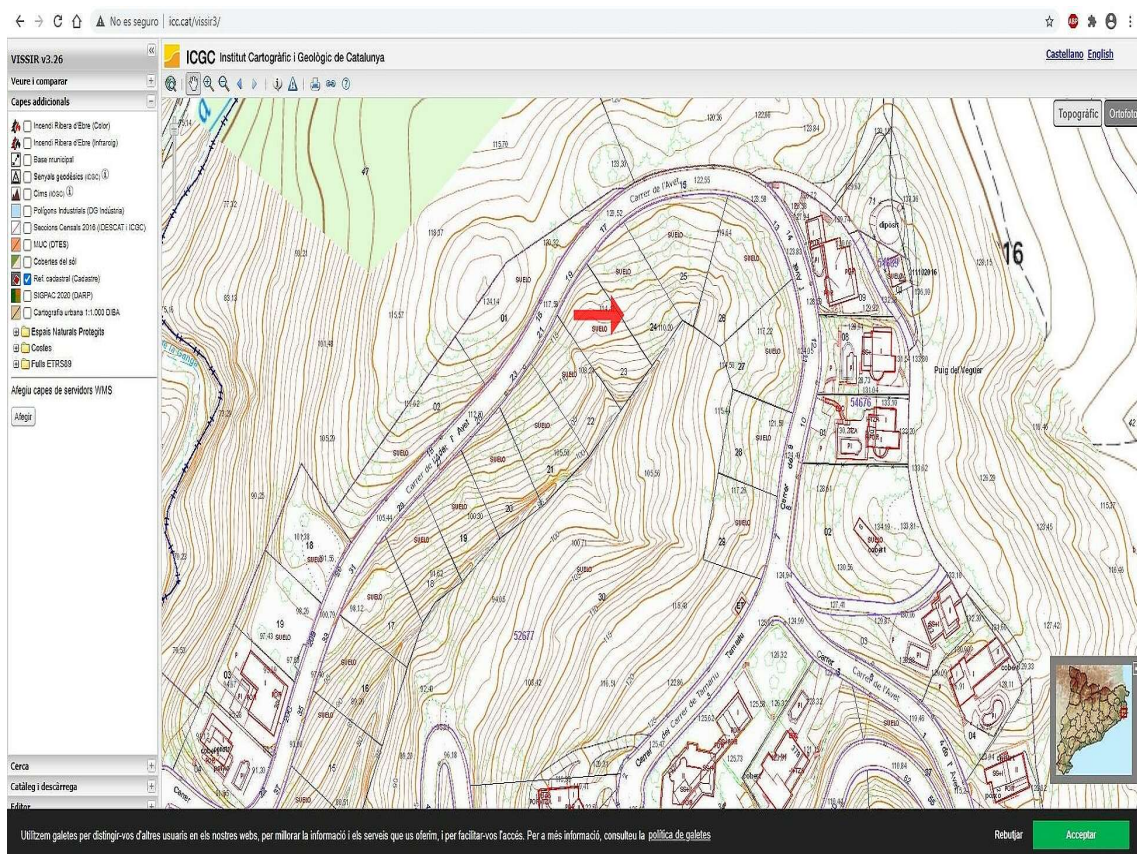
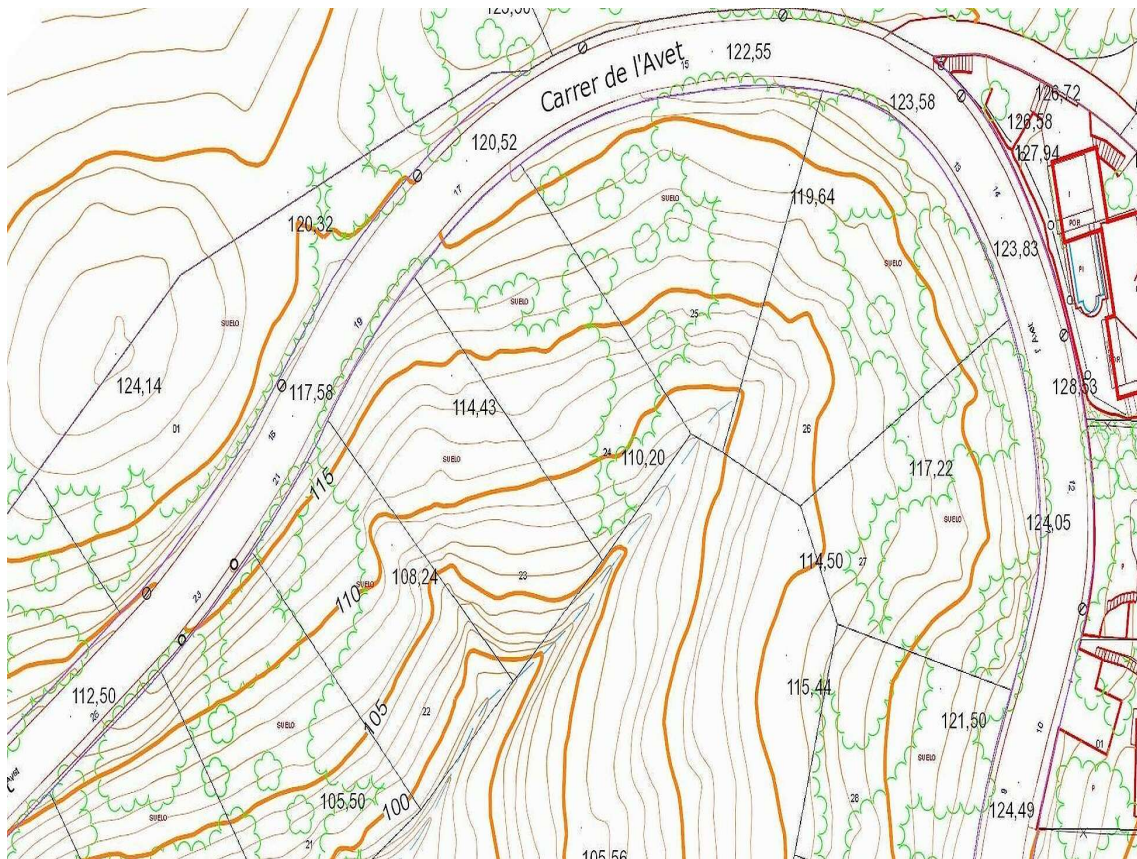


00.000 €

Transaction:	Vente	Type:	Maison
Situation:	Calle Avet, Calonge i Sant Antoni, Baix Empordà	Sup. Construite:	715 m <sup>2</sup>
Sup. Utile:	715 m <sup>2</sup>	Cert. habitabilité:	
État:			







This is a screenshot of the ICGC VISSIR v3.26 web application interface. The browser address bar shows 'iccat/vissir3/'. The interface includes a search bar, navigation tools, and a legend on the left side. The legend lists various map layers such as 'Inventari Ribera d'Ebre (Color)', 'Base municipal', 'Sinyals geodèsics (ICGC)', 'Cims (ICGC)', 'Polígons Industrials (DG Indústria)', 'Seccions Catastrals 2014 (IDESCAT i ICGC)', 'NUC (OPES)', 'Cobertes de sòl', 'Red subterrània (Catalunya)', 'SINAC 2008 (GADP)', 'Cartografia urbana 1:1.000 DGBA', 'Espais Naturals Protegits', 'Costes', and 'Puls ETRS89'. The main map area displays the same topographic map as the previous image, with a red arrow pointing to a specific location on the hillside. The interface also includes a 'Cerca' (Search) field, 'Català i descàrrega' (Catalan and download) options, and a footer with a disclaimer and 'Rebutjar' (Reject) and 'Acceptar' (Accept) buttons.