

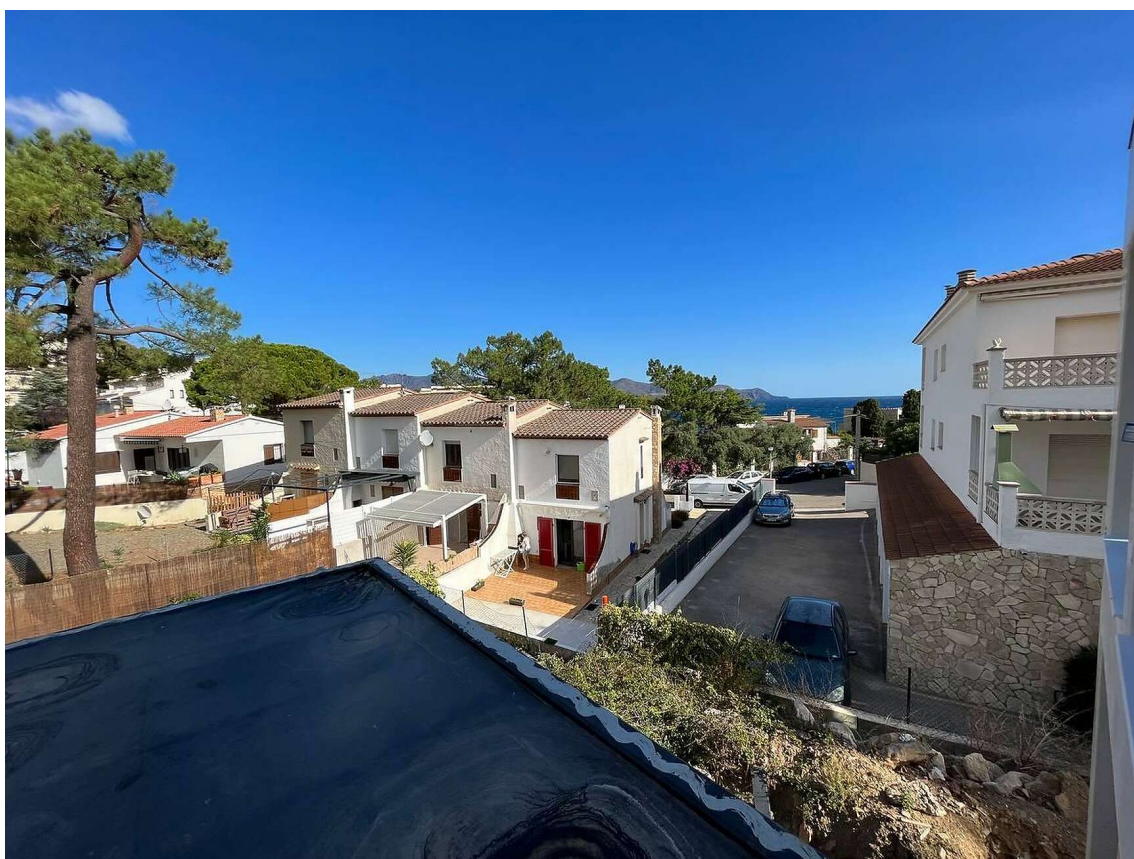

Exclusive property with views of the sea
960.000 €

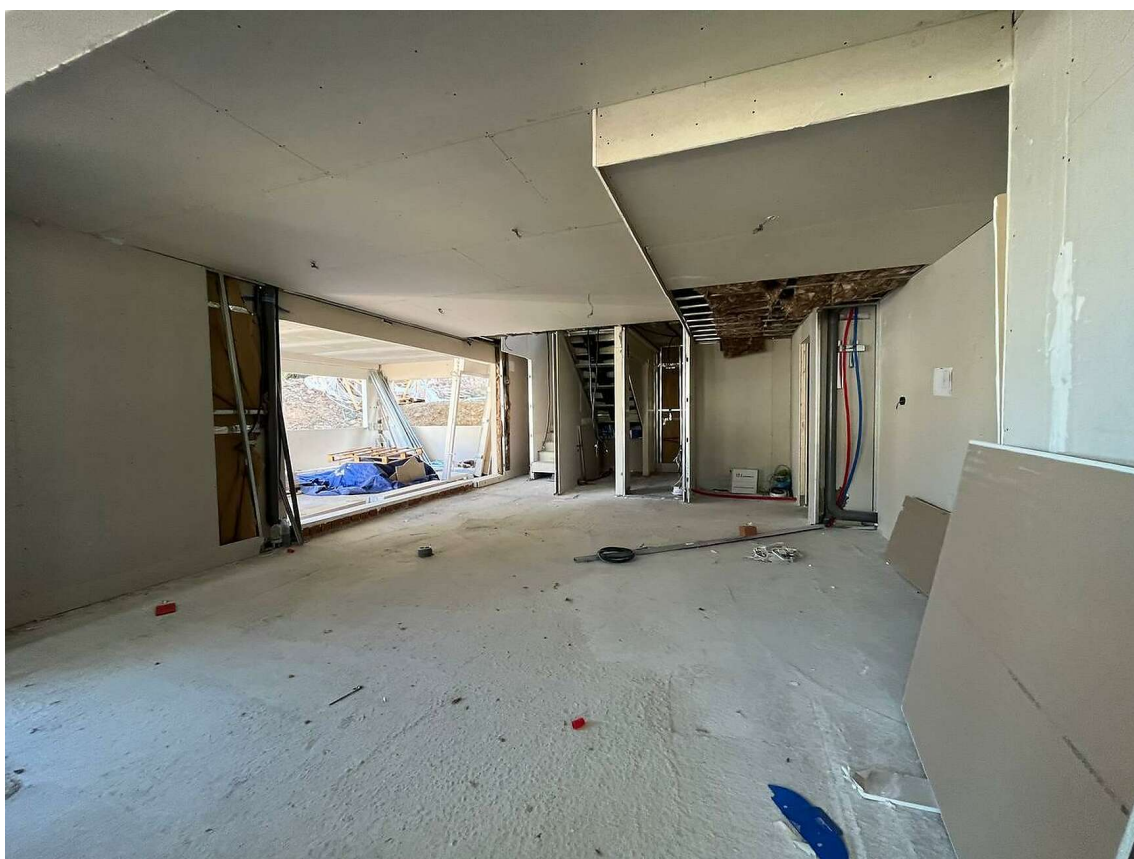
Introducing an exclusive new-build property in Llançà with panoramic views of the sea and mountains. The house consists of three independent units: one apartment on the ground floor and two on the first floor. The modern design blends with the surroundings thanks to the white concrete facade. The ground floor features a covered garage for 2 cars, a spacious porch, and a technical area. The first floor includes two apartments with a terrace, living room, dining area, open kitchen, three bedrooms, bathrooms, and toilets. There's a shared pool, perimeter garden, and parking spaces. The property is delivered with quality fittings, independent heating/cooling, and a well-designed garden. A unique opportunity for luxurious living in a beautiful setting.

Transaction:	Sale	Category:	House
Work category:	New construction	Situation:	Alt Empordà
Surface area:	300 m ²	Central heating:	Yes
Plot:	520		



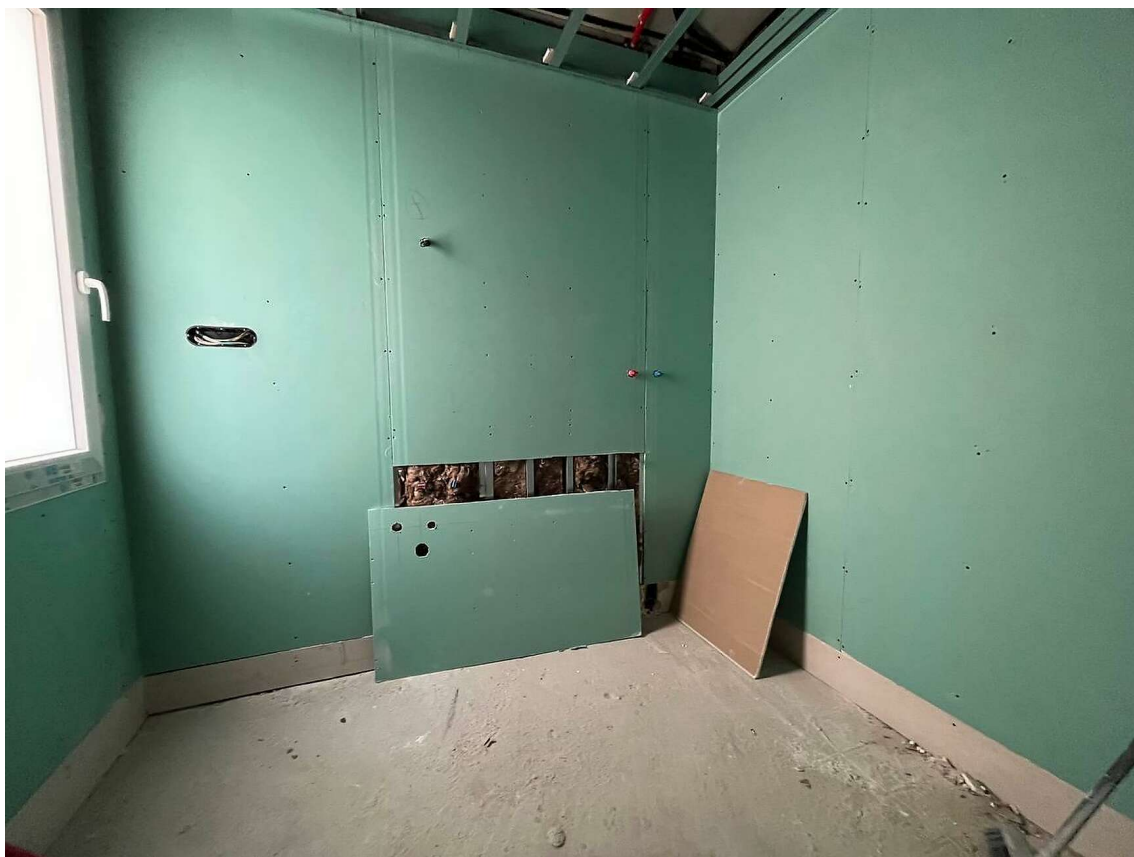
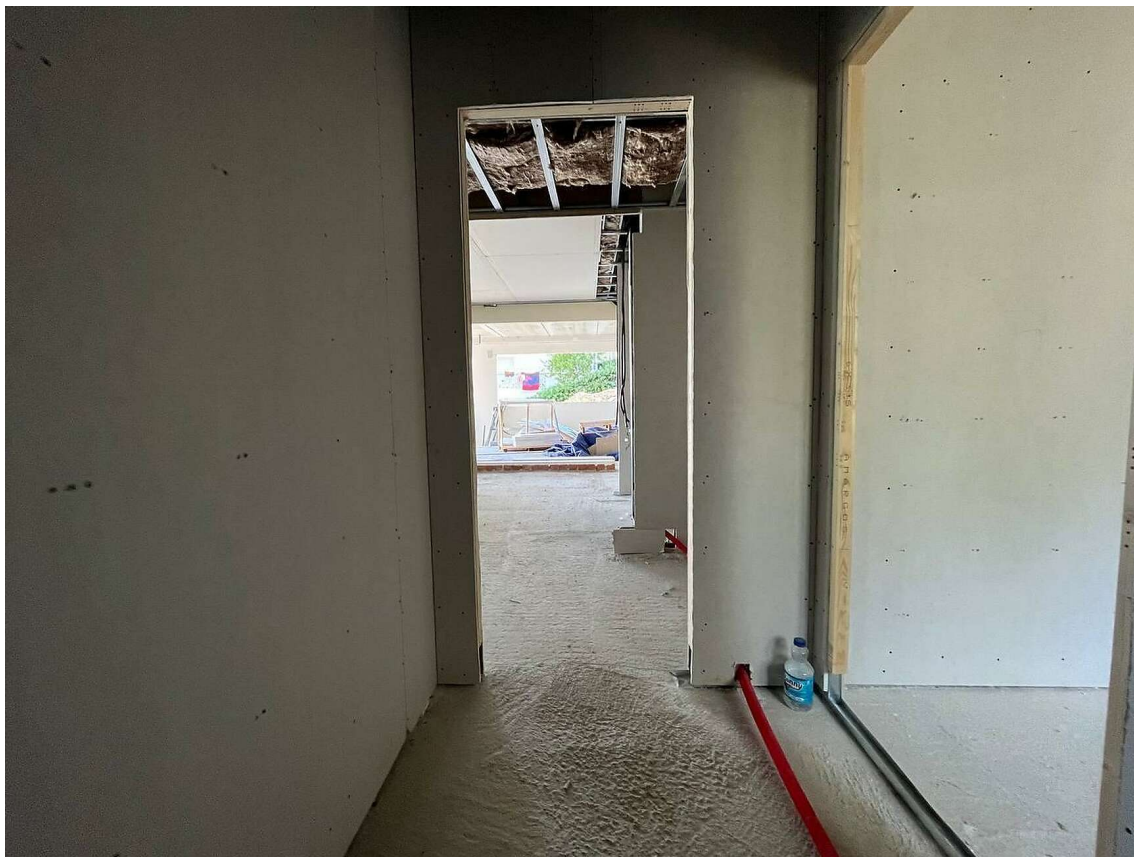






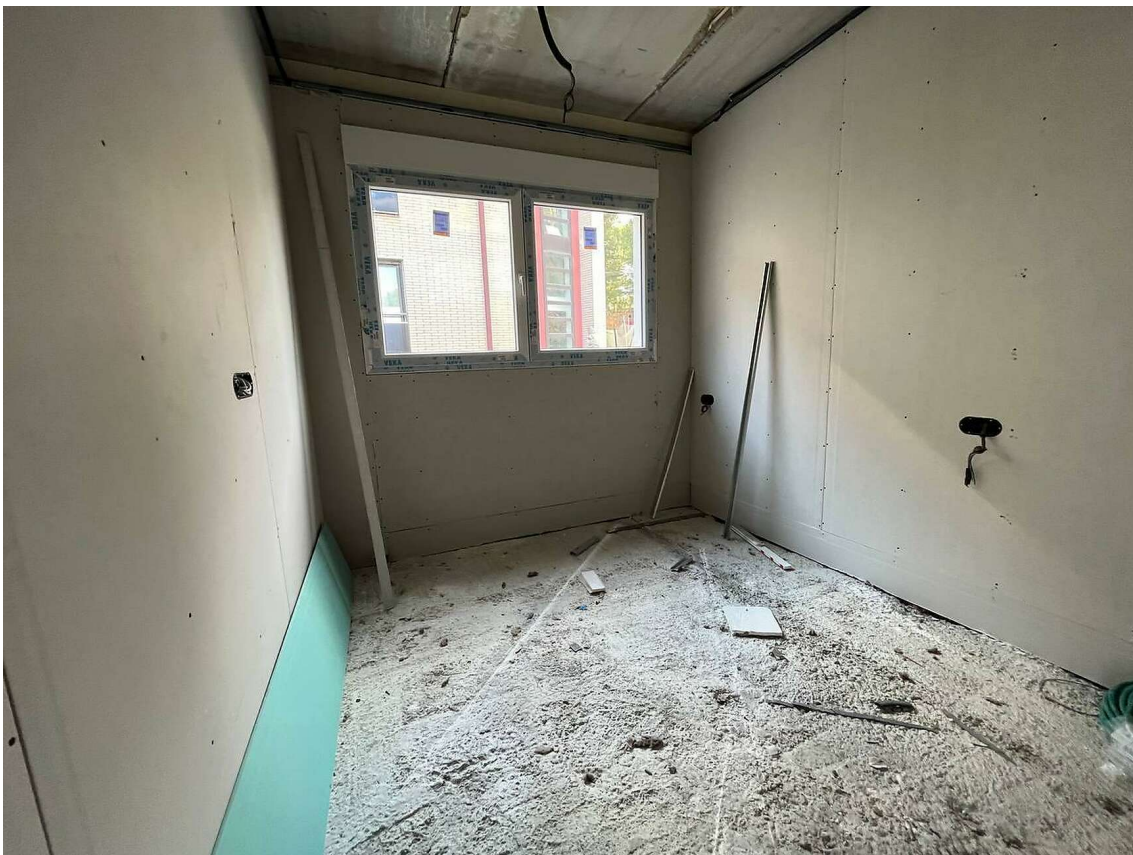








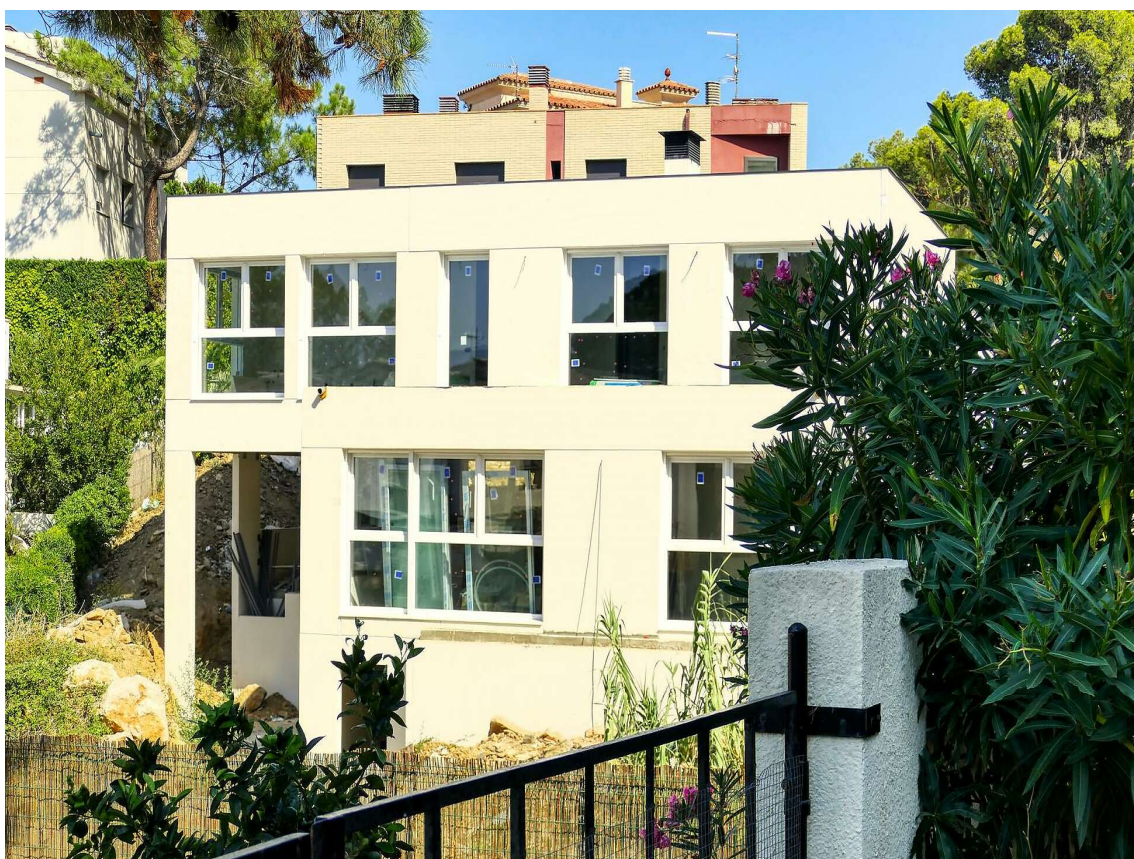


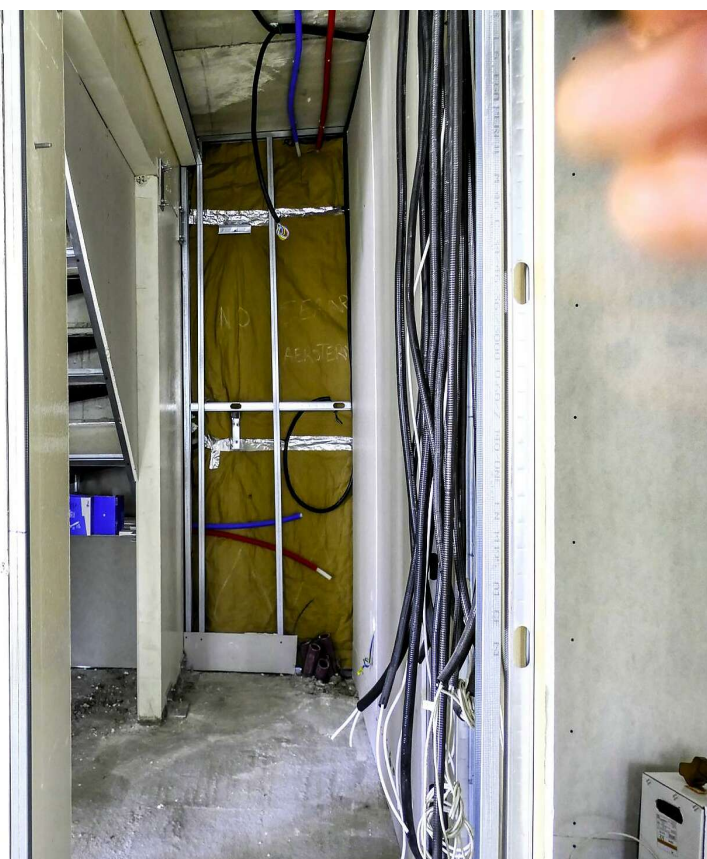




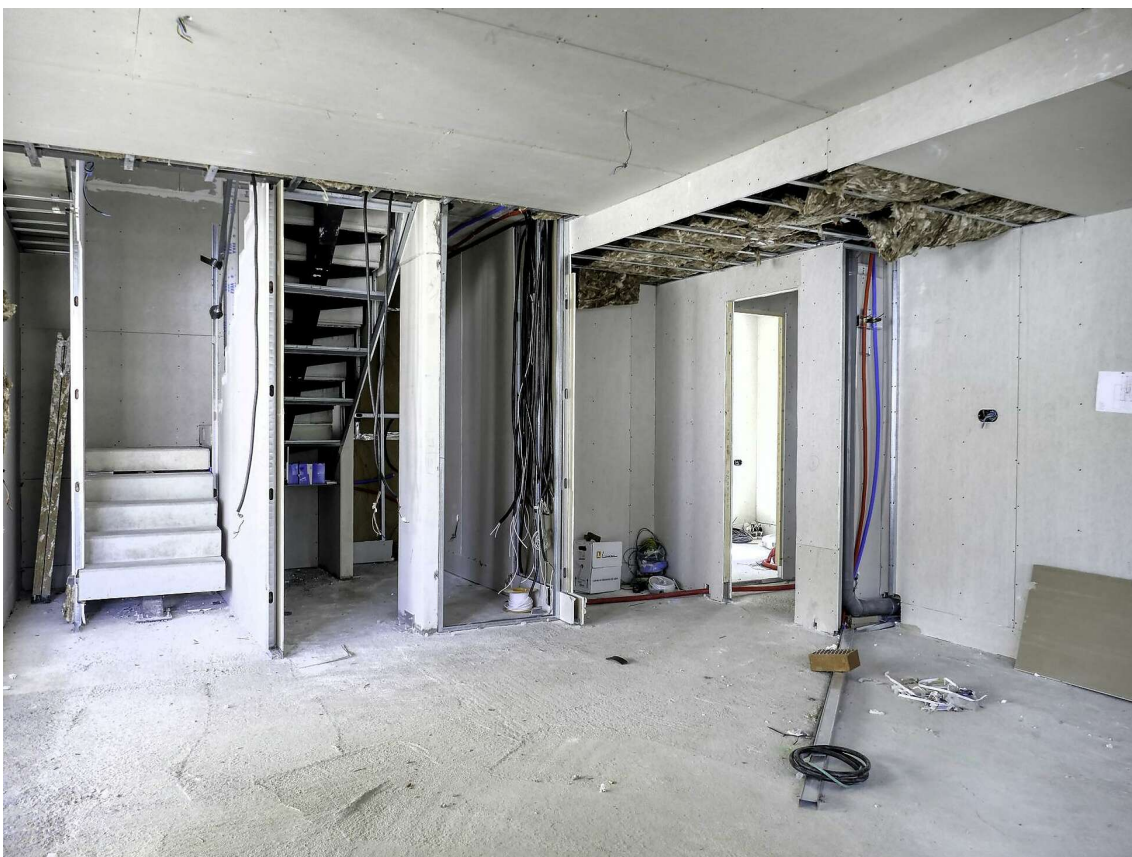






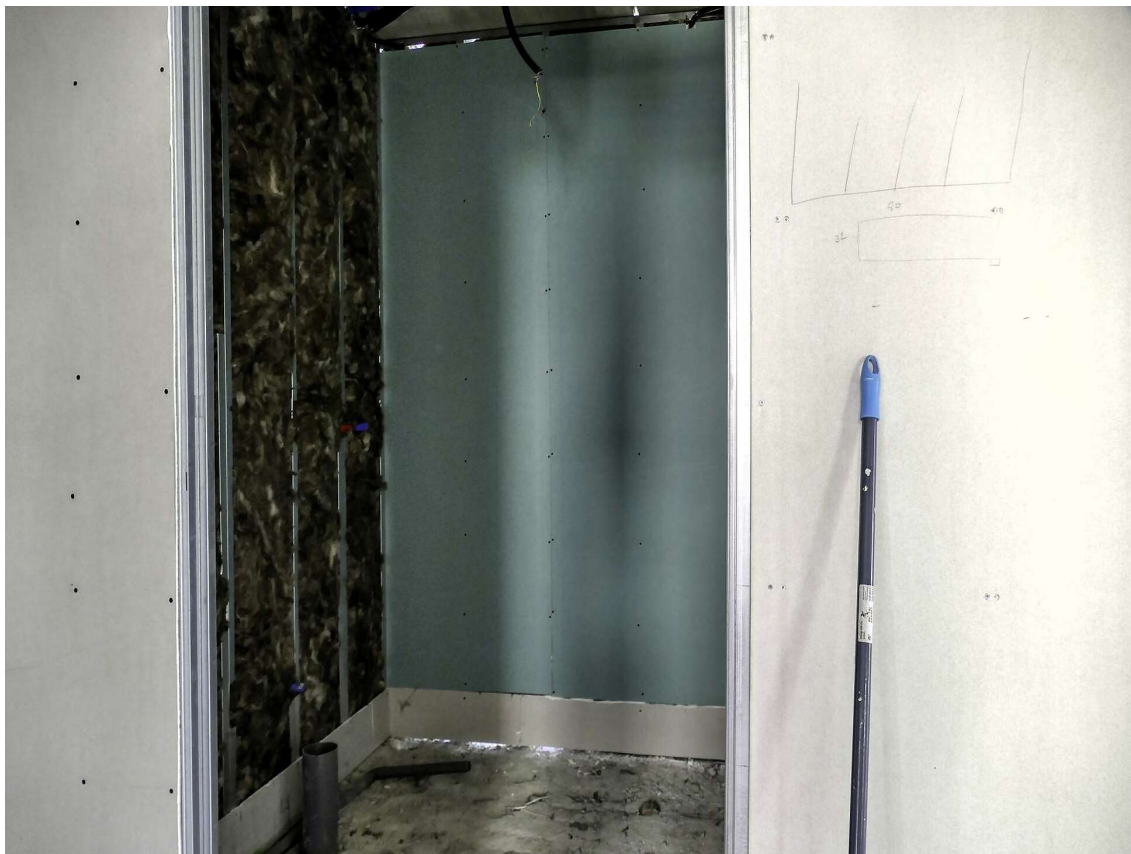


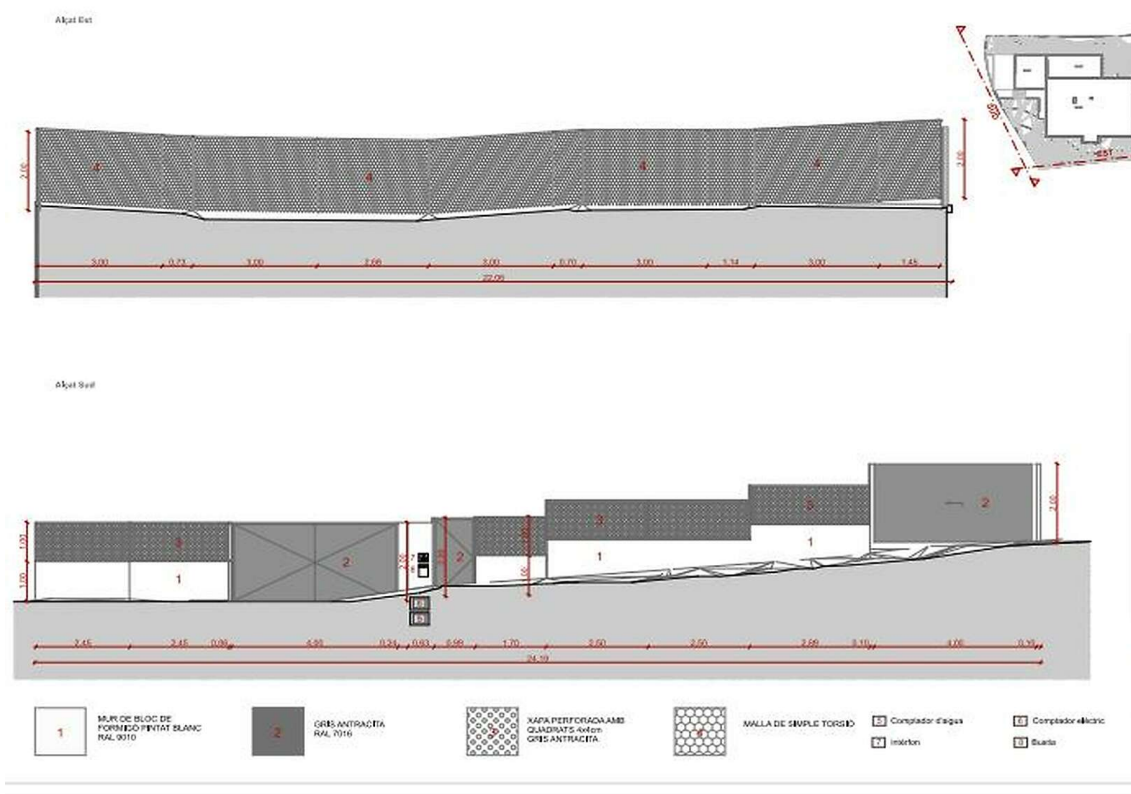
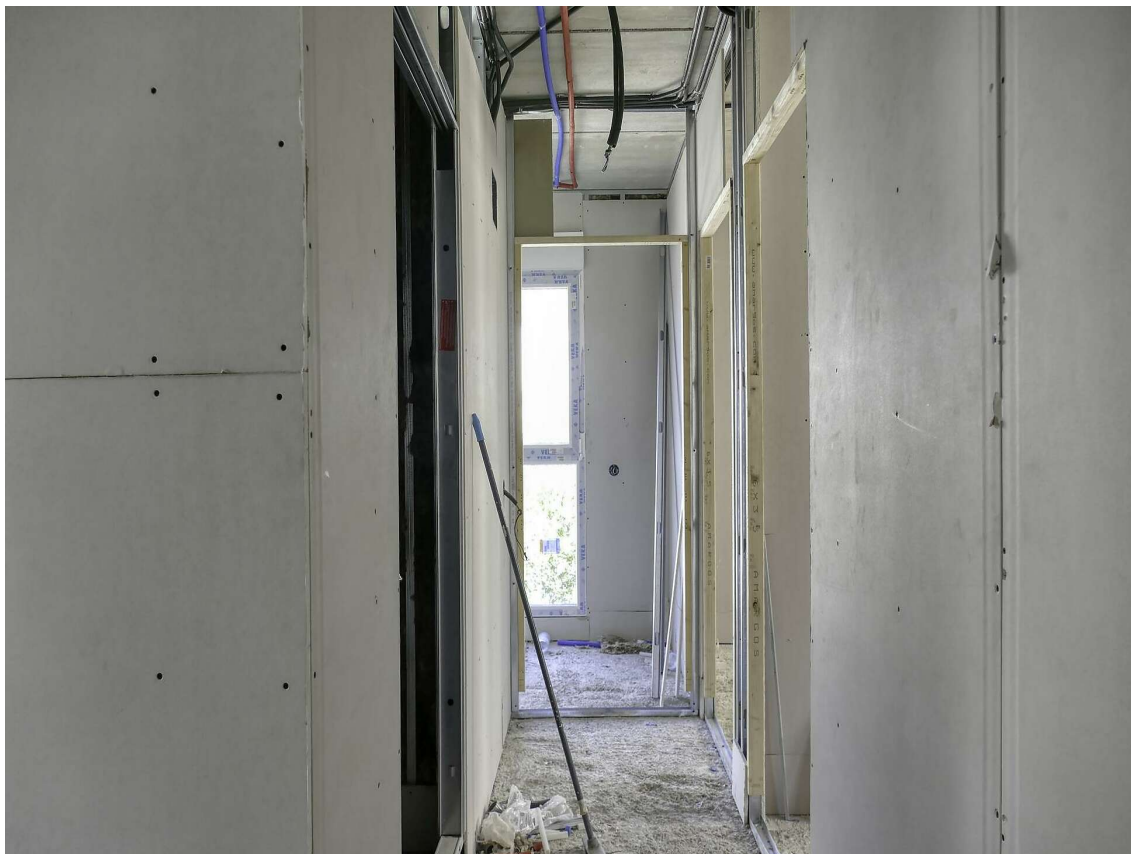


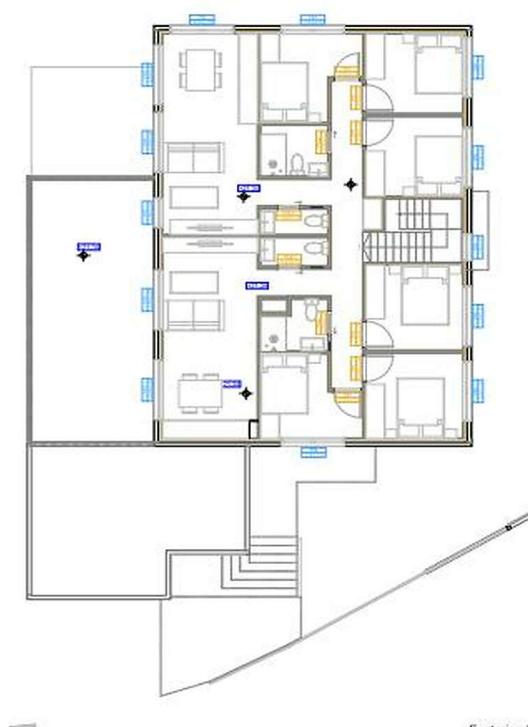












Fusteries Planta Primera



PLANTA PRIMERA INTERIOR	
SUPERFÍCIE ÚTIL	SUPERFÍCIE CONSTRUÏDA HABITATGE
Gany 3	3,52
Gany 4	1,80
Gany 5	2,01
Gany 6	3,12
Habitació 5	7,83
Habitació 3	8,11
Habitació 4	8,11
Habitació 6	8,66
Habitació 7	8,66
Habitació 8	7,66
Passadís 1	15,04
Sala-1	20,04
Sala-2	20,04
114,83 m²	148,00 m²

PLANTA PRIMERA EXTERIOR	
SUPERFÍCIE ÚTIL	
Terrassa	38,55
	38,55 m²

